



- For 12, 24 or 48VDC battery systems
- All inputs and outputs fully isolated
- Triple-zone insulation monitoring and Supervision relay
- “Pathfinder” Indicates polarity of dominant earth fault
- Response time: 125-165mS
- Analogue output proportional to meter reading (F-versions)

Specifications

KPM169C2x for 9-60VDC systems

Scale range:	0-30k Ω - ∞ (open >33k Ω)
Network line voltage:	Nom: 12 - 48VDC (>9 - <60VDC)
Adjustments	Trip level Delay
WARNING:	0-30k Ω 0-30secs
ALARM:	0-30k Ω 0,1-3secs

General

Auxiliary Supply:	Nom: 12-48VDC as standard (>9 - <60VDC, Fuse 0.5A)
Optional Voltage:	100-120, 200-240, 380-415 or 440-460VAC, 40-70Hz (Fuse 2A)
Contact rating:	AC: 100VA - 250V/2A max. DC: 50W - 100V/1A max.
Analogue Output: (other on request)	Up to 20mA, max 500R Up to 10V, min 100kohm
Temperature:	-20 to +70°C
Weight:	0.62kgs
Front protection:	IP52 (IP65 optional)

The unit meets IEC60092-504 and the relevant environmental and EMC tests specified in IEC60068/60092 and IEC61000/60533 respectively, to comply with the requirements of the major Classification Societies.

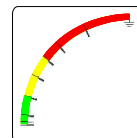
Application

The digitally controlled KPM169C2x monitors insulation level between a live non-grounded (IT) battery or live DC network and its protective earth.

Only ONE KPM169C2x can be connected to the same DC-system. An AC or DC (standard) auxiliary voltage is required for the unit. A green LED indicates AUX POWER on. Start of monitoring function is delayed when auxiliary power is switched on (default 2 secs delay). In this way false tripping during power up, caused by initial charging of network spread capacitance, is avoided.

The DIN96 front-of-panel mounted instrument reads the insulation level directly in k Ω . The meter has reflection free glass. The ohmmeter and the triple-zone status LEDs at a glance gives the clear safety message:

- ALARM (red zone)
- WARNING (yellow zone)
- HEALTHY (green zone)



General

SEV MEASURING PRINCIPLE

Insulation is measured between the complete galvanically interconnected DC network and its protective earth. The signal flows to ground via the path of the insulation fault, the level of flow expresses the insulation resistance, the direction of flow expresses the fault polarity. The measuring accuracy is not influenced by any normal kind of load attached to the network. The detection time for an insulation fault is 125-165mS.

PATHFINDER / POLARITY FUNCTION

During a Warning or Alarm condition the Polarity LED indicates the polarity causing the trip:

- POSITIVE EARTH FAULT: LED not lit
- NEGATIVE EARTH FAULT: blue LED lit

RELAY OUTPUTS

The unit has non-latching C/O relay outputs for Warning (R1), Alarm (R2) and System Error (R3). The Alarm and error relays are fail to safety configured. A trip LED flashes when the trip level is passed, the relay trips after elapsed delay. The timer resets if the fault is removed during countdown. Trip levels and delays are settable on unit rear. Recommended trip level settings will depend on application and priority of safety hazards.

ANALOGUE OUTPUT

All F versions have an isolated analogue output proportional to meter reading.

SYSTEM SUPERVISION

If voltage of the monitored DC system not connected to the unit input or is too low, the NEG POLARITY LED will flash red, and relay 3 (System Error) will trip. If polarity of the input connection reversed, the NEG POLARITY LED will flash red and blue, and relay 3 will trip. Trip of relay 3 will inhibit operation of the warning and alarm relay and their respective trip LEDs.



Description

KPM169C2x models for 9- 60VDC

These units are used for industrial, marine and offshore installations. Start of monitoring function is delayed when auxiliary power is switched on (default 2 secs delay).

Direct connection for 12, 24 or 48VDC systems.

Relay Operation

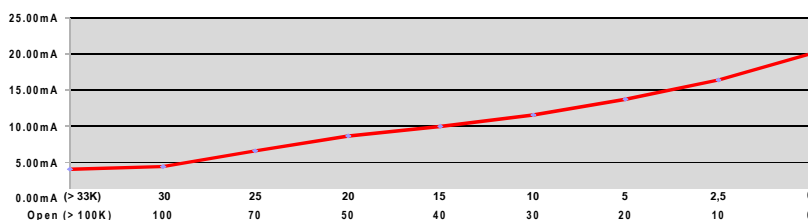
Scale range: 0-30kΩ - ∞ (>33kΩ)

	Warning	Alarm	System Error	Fail Safe	Latch
R1	✓				
R2		✓		✓	✓
R3			✓	✓	

Model	Latch	Output	Fail-safe	Adjustments	Trip level	Delay
KPM169C2	-	-	X		0-30kΩ	0-30secs
KPM169C2F	-	X	X	WARNING:	0-30kΩ	0,1-3secs
KPM169C2G	X	-	X	ALARM:	0-30kΩ	
KPM169C2GF	X	X	X			
KPM169C2H	-	-	-			
KPM169C2FH	-	X	-			
KPM169C2GH	X	-	-			
KPM169C2GFH	X	X	-			

Coloured sectors show recommended areas of settings:
 - Indicates alarm trip zone
 - Indicates warning trip zone
 - Indicates healthy zone

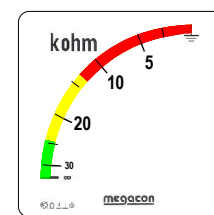
Output diagram



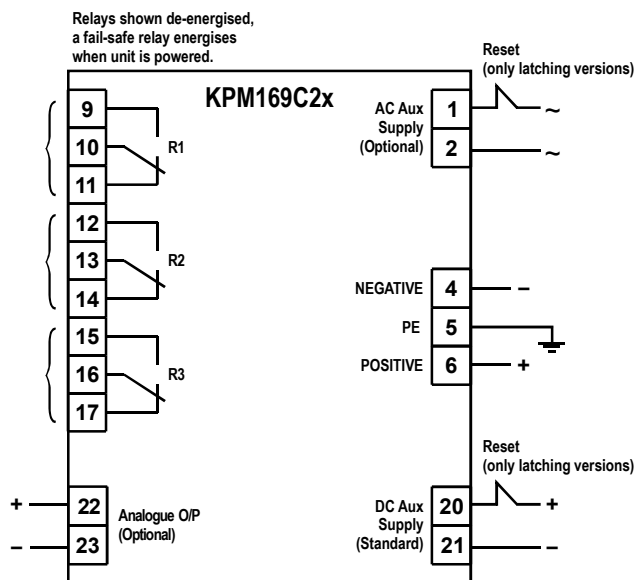
Output table (example for 4-20mA)

Value (scale)	mA output
0kΩ	20.00mA
2,5kΩ	16.41mA
5kΩ	13.66mA
10kΩ	11.56mA
15kΩ	9.91mA
20kΩ	8.56mA
25kΩ	6.51mA
30kΩ	4.42mA
open (>33kΩ)	4.00mA

Range



Connection



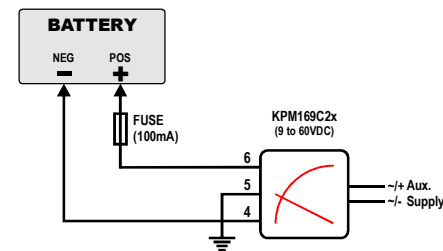
Analogue Output

KPM169C2F and KPM169C2GF have an analogue output proportional to meter reading. (Special outputs are available on request)

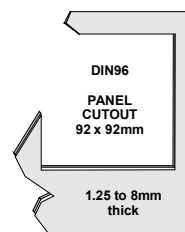
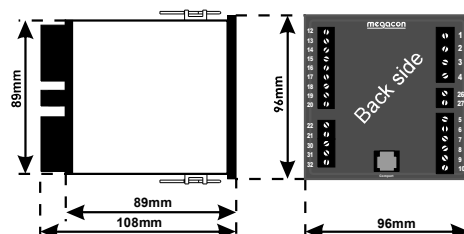
Add suffix from table below to type designation to specify output required:

O/P1	0 - 10mA	O/P6	N/A
O/P2	0 - 20mA	O/P7	N/A
O/P3	4 - 20mA	O/P8	0 - 10VDC
O/P4	N/A	O/P9	N/A
O/P5	N/A	O/P10	N/A

DIRECT INPUT <60VDC



Dimensions



The MEGAcon policy is one of continuous improvement, consequently equipment supplied may vary in detail from this publication.

ORDERING INFORMATION

Type	: KPM169C2F
Aux. Supply	: 24VDC
Network Voltage	: 24VDC
Analogue O/P	: 4-20mA
Range	: -

IS
range

Norway
Denmark
United Kingdom
megacon



www.megacon.com
ELECTRONIC CONTROL AND INSTRUMENTATION
SELCOUSA.com

Innovation Beyond Tradition
Uniquely MEGAcon, simpler it can't be!

CE
Page: 2 of 2